



12 The Outlook Bilgola Plateau NSW

3 2 2

Panoramic views with level gardens

Nestled in a prized, family-friendly location in Bilgola Plateau, where every day begins with breathtaking 180 degree views from the North to Bilgola Beach. Boasting a sun-drenched, level backyard that seamlessly extends from the living spaces and undercover entertaining area, that is perfect for children and pets alike.

Step inside to discover an open plan design that exudes warmth and character with polished hardwood floors and unique timber panelling throughout echoing the natural beauty of the surroundings. The home's two-storey layout allows for plenty of natural light to flow in, creating a warm and inviting atmosphere. The master suite comes complete

Type : House

View : <https://www.blakeproperty.com.au/sale/nsw/north-ern-beaches/bilgola-plateau/residential/house/8102866>



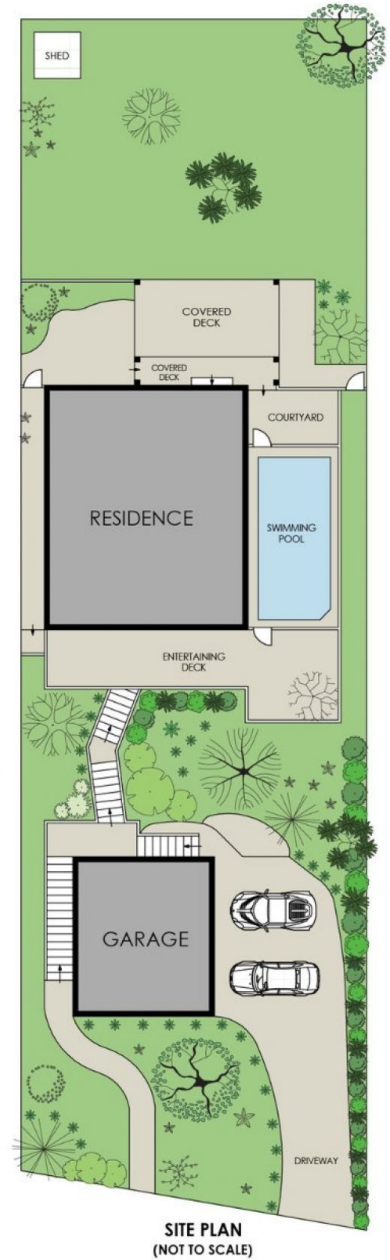
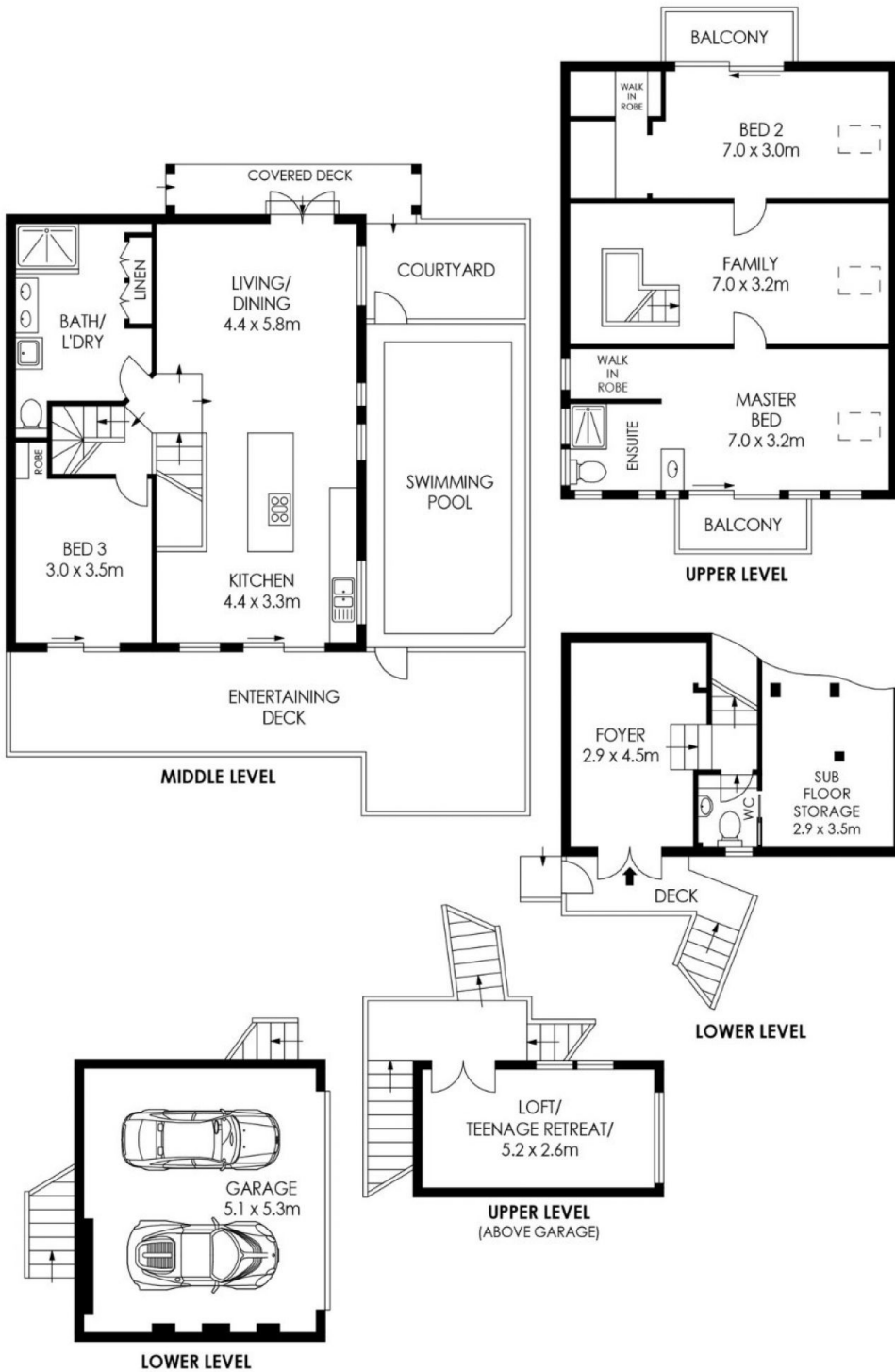
Andrew Blake
02 9973 4444



Zac Pearson
02 9973 4444

[For full version visit the website](https://www.blakeproperty.com.au)

<https://www.blakeproperty.com.au>



APPROX. INTERNAL AREA = 163 m²
 APPROX. EXTERNAL AREA = 86 m²
 TOTAL = 249 m²
 LAND SIZE = 645 m²

PLANS SHOWN ONLY INDICATIVE OF LAYOUT. DIMENSIONS ARE APPROXIMATE.



12 The Outlook, Bilgola Plateau

BLAKE